

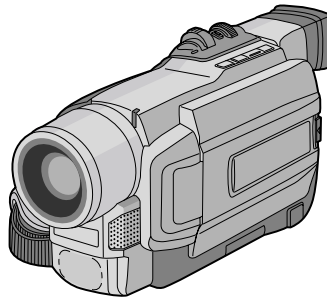
JVC

SCHEMATIC DIAGRAMS

DIGITAL VIDEO CAMERA

GR-DVL813KR,817KR

CD-ROM No.SML200110



Regarding service information other than these sections, refer to the GR-DVL815U service manual (No. 86601). Also, be sure to note important safety precautions provided in the service manual.

SPECIFICATIONS *(The specifications shown pertain specifically to the model GR-DVL318KR,817KR)*

캠코더	
일반사항	
전원:	: DC 11.0V \equiv (AC 전원 어댑터 사용) : DC 7.2 V \equiv (배터리 팩 사용)
소비전력:	
LCD 모니터 OFF, 뷰파인더 ON	: 약 4.3 W
LCD 모니터 ON, 뷰파인더 OFF	: 약 5.3 W
비디오 라이트	: 약 3.5 W
크기 (W x H x D)	: 83 mm x 97 mm x 188 mm (3-5/16" x 3-7/8" x 7-7/16") (LCD 모니터를 접고, 뷰파인더를 내린 상태에서)
무게	: 약 610 g (1.4 lbs) (GR-DVL817) : 약 600 g (1.4 lbs) (GR-DVL318)
작동 온도	: 0°C ~ 40°C (화씨 32 ~ 104도)
작동 습도	: 35% ~ 80%
저장 온도	: -20°C ~ 50°C (화씨 -4 ~ 122도)
픽업	: 1/4" CCD
렌즈	: F 1.8, f = 3.6 mm ~ 36 mm, 10:1 파워 줌 렌즈
필터 직경	: \varnothing 37 mm
LCD 모니터	: 3.5" 대각선 측정화면, LCD 패널/TFT active matrix system (GR-DVL817) 3" 대각선 측정화면, LCD 패널/TFT active matrix system (GR-DVL318)
뷰파인더	: 0.24" 흑백 LCD 전자식 뷰파인더
스피커	: 모노럴
디지털 비디오 카메라	
포맷	: DV 포맷 (SD 모드)
시그널 포맷	: NTSC 표준
녹화/재생 포맷	: 비디오: 디지털 콤포넌트 녹화 : 오디오: PCM 디지털 녹화, 32 kHz 4 채널 (12-bit), 48 kHz 2 채널 (16-bit)
카세트	: Mini DV 카세트
테이프 속도	: SP: 18.8 mm/s LP: 12.5 mm/s
최대 녹화 시간 (80분용 카세트 사용시)	: SP: 80 분 LP: 120 분

디지털 스틸 카메라 (GR-DVL817 에 한함)

저장 매체	: SD 메모리 카드/MultiMedia 카드
압축저장 방식	: JPEG (compatible)
파일 크기	: VGA (640 x 480 픽셀)
화질	: 2 모드 (FINE/STANDARD) [8 MB]의 메모리 카드에 저장가능한 이미지 수량 (GR-DVL817 에 한함) FINE : 100 STANDARD : 200 [16 MB]의 메모리 카드일 경우 (옵션) FINE : 200 STANDARD : 400 [32 MB]의 메모리 카드일 경우 (옵션) FINE : 400 STANDARD : 800 [64 MB]의 메모리 카드일 경우 (옵션) FINE : 800 STANDARD : 1600

연결기기

S-VIDEO

출력	: Y: 1 V (p-p), 75 Ω , 아날로그 : C: 0.29 V (p-p), 75 Ω , 아날로그
----	---

AV

VIDEO 출력	: 1 V (p-p), 75 Ω , 아날로그
AUDIO 출력	: 300mV (rms), 1 k Ω , 아날로그, 스테레오

DV

출력	: 4-pin, IEEE 1394 compliant
입력	: 4-pin, IEEE 1394 compliant
USB (GR-DVL 817에 한함)	: 5-pin

PC (DIGITAL PHOTO)

(GR-DVL31 8에 한함)	: \varnothing 2.5 mm, 3-pole
EDIT (GR-DVL81 7에 한함)	: \varnothing 3.5 mm, 2-pole
JLIP (GR-DVL31 8에 한함)	: \varnothing 3.5 mm, 4-pole

AC 전원 어댑터 AP-V10KR

전원	: AC 110 V to 220 V ~ , 60 Hz
출력	: DC 11 V \equiv , 1 A
크기 (W x H x D)	: 59 mm x 31 mm x 84 mm (2-3/8" x 1-1/4" x 3-5/16")
무게	: 약 140g (전원코드 불포함)

예시된 제품사양은 별도로 표시하지 않은 한 SP모드일 경우입니다. E & O.E. 디자인과 제품 사양은 사전 통보없이 변경될 수 있습니다.

COMPONENT PARTS LOCATION GUIDE <MAIN/YB10317-01-03>

(1/2)

REF.NO.	LOCATION	REF.NO.	LOCATION	REF.NO.	LOCATION	REF.NO.	LOCATION	REF.NO.	LOCATION	REF.NO.	LOCATION	REF.NO.	LOCATION								
CAPACITOR				C2004	A C	5A	C3502	A C	3C	C4301	B C	4C	C5520	A C	3C	C8025	B C	1B	IC3951	A C	3B
C1001	B C	5A	C2005	A C	5A	C3503	A C	2D	C4302	B C	3C	C6001	A C	2A	C8026	B C	2B	IC4201	B C	4C	
C1002	B C	4A	C2006	A C	4A	C3504	A C	2C	C4303	B C	4C	C6004	A C	2A	C8027	B C	1C	IC4202	B C	4C	
C1003	B C	4A	C2007	A C	4A	C3505	A C	2C	C4304	B C	5B	C6005	A C	2A	C8028	B C	1C	IC4301	B C	4B	
C1004	B C	4A	C2008	A C	4A	C3506	A C	2C	C4305	B C	4C	C6101	A C	1B	C8029	B C	2C	IC4302	B C	4C	
C1005	B C	5A	C2009	A C	4A	C3507	A C	2C	C4306	B C	4C	C6102	A C	1B	C8030	B C	2C	IC4304	B C	4C	
C1006	B C	5A	C2010	A C	4A	C3508	A C	2C	C4307	B C	4B	C6103	A C	1B	C8031	B C	2C	IC4802	A C	4C	
C1007	B C	3B	C2011	A C	4A	C3509	A C	2C	C4308	B C	4B	C6105	A C	1B	C8039	B C	3C	IC4803	A C	4C	
C1008	B C	5A	C2012	A C	5A	C3510	A C	2C	C4309	B C	4C	C6106	A C	2B	C8040	B C	1C	IC4804	A C	3B	
C1009	B C	5A	C2013	A C	4A	C3511	A C	3C	C4310	B C	4C	C6107	A C	2B	C8045	B C	3C	IC4806	A C	4B	
C1010	B C	5A	C2014	A C	4A	C3512	A C	3C	C4311	B C	4C	C6108	A C	2B	C8046	B C	3B	IC4851	A C	4B	
C1011	B C	5A	C2015	A C	4B	C3513	A C	3C	C4312	B C	5B	C6109	A C	2B	C8047	B C	3C	IC5501	A C	4C	
C1012	B C	5A	C2016	A C	4A	C3514	A C	3C	C4313	B C	4B	C6110	A C	3B	C8051	B C	2C	IC6001	A C	2A	
C1013	B C	5A	C2017	A C	4A	C3515	A C	3C	C4314	B C	5B	C6111	A C	3A	C8052	B C	2C	IC6101	A C	2A	
C1014	B C	5A	C2018	A C	4A	C3516	A C	3C	C4315	B C	5B	C6112	A C	3A	C8053	B C	2D	IC8001	B C	2C	
C1015	B C	5A	C2019	A C	4A	C3517	A C	3C	C4317	B C	5C	C6113	A C	3A	C8054	B C	2C	IC8002	B C	2B	
C1016	B C	5A	C2020	A C	4A	C3518	A C	3C	C4318	B C	4B	C6114	A C	3A	C8055	B C	2C	IC8003	B C	1B	
C1017	B C	5A	C2021	A C	4A	C3519	A C	3C	C4319	B C	5B	C6115	A C	3A	C8401	A C	3C	IC8004	B C	3C	
C1018	B C	5A	C2101	A C	5A	C3520	A C	2C	C4320	B C	5C	C6116	A C	3A	C8402	A C	3C	IC8005	B C	2C	
C1019	B C	5A	C2102	A C	5A	C3521	A C	2C	C4321	B C	5C	C6117	A C	2A	C8403	A C	3C	IC8006	B C	2C	
C1020	B C	4B	C2103	A C	5A	C3522	A C	2C	C4322	B C	4B	C6118	A C	2A	C8404	A C	3C	IC8007	B C	1C	
C1021	B C	4B	C2104	A C	5A	C3523	A C	2C	C4323	B C	4C	C6119	A C	2A	C8405	A C	5B	IC8051	B C	2D	
C1022	B C	3B	C2107	A C	5A	C3524	A C	2C	C4324	B C	3B	C6120	A C	2A	C8406	A C	5B	IC8052	B C	2C	
C1023	B C	3B	C2108	A C	5A	C3525	A C	2C	C4325	B C	4B	C6121	A C	2A	C8407	A C	5B	IC8053	B C	2C	
C1024	B C	4A	C2109	A C	5A	C3526	A C	2C	C4326	B C	4B	C6122	A C	2A	C8408	A C	4B	IC8401	A C	3C	
C1025	B C	4A	C2110	A C	5A	C3527	A C	3C	C4327	B C	4B	C6123	A C	2A	C8409	A C	4B	IC8402	A C	5B	
C1026	B C	4A	C2111	A C	4A	C3701	A C	1A	C4328	B C	4B	C6124	A C	2A	CONNECTOR				IC8403	A C	5B
C1027	B C	5A	C2112	A C	5A	C3702	A C	3A	C4329	B C	4B	C6125	A C	2A	CN101	A C	5B	COIL			
C1028	B C	5A	C2113	A C	5A	C3703	A C	3A	C4330	B C	4C	C6126	A C	2A	CN102	A C	5B	L1001	B C	5A	
C1029	B C	5A	C2114	A C	5A	C3704	A C	3A	C4331	B C	3C	C6127	A C	2A	CN103	B C	5B	L1002	B C	4A	
C1030	B C	5A	C2115	A C	4A	C3705	A C	3A	C4332	B C	3C	C6128	A C	2A	CN104	A C	1B	L1401	B C	3B	
C1031	B C	4A	C2116	A C	5A	C3706	A C	3A	C4333	B C	4C	C6129	A C	2B	CN105	B C	1B	L1402	B C	3B	
C1032	B C	3A	C2121	A C	5A	C3707	A C	1A	C4334	B C	3C	C6130	A C	2B	CN106	A C	5A	L2001	A C	4A	
C1033	B C	3A	C2122	A C	5A	C3708	A C	2A	C4335	B C	4B	C6131	A C	1A	CN107	A C	4D	L2002	A C	4B	
C1034	B C	4A	C2123	A C	5B	C3709	A C	2A	C4336	B C	4C	C6132	A C	1A	CN108	A C	4C	L3001	B C	1A	
C1035	B C	4A	C2124	A C	5A	C3710	A C	1A	C4337	B C	4B	C6133	A C	1A	CN109	A C	1D	L3002	B C	1A	
C1036	B C	4A	C2125	A C	5B	C3711	A C	1A	C4338	B C	4B	C6134	A C	2B	CN110	A C	2D	L3003	B C	1A	
C1037	B C	4A	C2126	A C	5A	C3712	A C	1A	C4339	B C	5C	C6201	A C	2C	CN111	B C	1B	L3004	B C	1A	
C1038	B C	4A	C2129	A C	5A	C3713	A C	1A	C4340	B C	4C	C6202	A C	2B	CN112	B C	4D	L3005	B C	1A	
C1039	B C	5A	C2130	A C	5A	C3714	A C	1A	C4341	B C	4C	C6203	A C	3A	CN113	A C	3D	L3006	B C	3A	
C1040	A C	1B	C2131	A C	5A	C3715	A C	1A	C4342	B C	5C	C6204	A C	2A	DIODE				L3007	B C	3A
C1041	A C	1B	C2132	A C	5A	C3716	A C	1A	C4343	B C	4B	C6205	A C	2A	D1001	A C	1C	L3008	B C	3A	
C1307	B C	3A	C2133	A C	5B	C3717	A C	1A	C4344	B C	5C	C6206	A C	1C	D1002	A C	4B	L3009	B C	3A	
C1401	B C	3B	C2134	A C	5A	C3718	A C	1A	C4345	B C	4B	C6207	A C	2C	D1301	B C	3A	L3010	B C	1A	
C1402	B C	3B	C2201	A C	5A	C3901	A C	3A	C4346	B C	4B	C6208	A C	3A	D1302	B C	3A	L3011	B C	1A	
C1405	B C	3A	C2202	A C	5A	C3902	A C	3A	C4347	B C	4B	C6209	A C	1C	D1602	B C	3D	L3012	B C	1A	
C1406	B C	3B	C3001	B C	1A	C3903	A C	3A	C4348	B C	4B	C6210	A C	2C	D1603	B C	4D	L3013	B C	3A	
C1408	B C	3B	C3003	B C	1A	C3904	A C	3A	C4349	B C	5C	C6211	A C	3A	D1604	B C	3C	L3501	A C	3C	
C1409	B C	3B	C3004	B C	1A	C3905	A C	3B	C4350	B C	5B	C6212	A C	1C	D2001	A C	4A	L3502	A C	3C	
C1410	B C	3A	C3005	B C	1A	C3906	A C	3B	C4803	A C	4C	C6213	A C	2B	D2002	A C	4A	L3503	A C	2B	
C1411	B C	3A	C3007	B C	1A	C3907	A C	3B	C4804	A C	4C	C6214	A C	1C	D3001	B C	3A	L3504	A C	2C	
C1412	B C	3A	C3008	B C	3A	C3908	A C	3B	C4805	A C	4B	C6215	A C	1B	D3002	B C	3B	L3505	A C	2C	
C1413	B C	3B	C3011	B C	2A	C3909	A C	3B	C4806	A C	3C	C6216	A C	3A	D3003	B C	3A	L3701	A C	1A	
C1414	B C	3B	C3012	B C	2A	C3910	A C	4B	C4807	A C	3C	C6217	A C	1B	D3701	A C	1A	L3901	A C	3B	
C1415	B C	3B	C3013	B C	2A	C3911	A C	4A	C4808	A C	4C	C6218	A C	1B	D5501	A C	3C	L3902	A C	3B	
C1416	B C	3B	C3015	B C	2A	C3912	A C	4A	C4809	A C	4C	C6219	A C	2A	D6002	A C	2A	L3903	A C	4B	
C1417	B C	3A	C3016	B C	2A	C3913	A C	4A	C4810	A C	4C	C6220	A C	1B	D6201	A C	2B	L3904	A C	3A	
C1418	B C	3A	C3017	B C	2A	C3914	A C	3A	C4811	A C	4C	C6221	A C	2B	D6202	A C	2C	L3951	A C	3B	
C1419	B C	3A	C3020	B C	2A	C3915	A C	3A	C4812	A C	4C	C6222	A C	2B	D6203	A C	1C	L3952	A C	3A	
C1420	B C	3A	C3021	B C	2A	C3916	A C	3A	C4813	A C	3B	C6223	A C	1B	D6204	A C	1B	L3953	A C	3B	
C1601	B C	3D	C3022	B C	3A	C3917	A C	3B	C4814	A C	4C	C6224	A C	3A	D6205	A C	1B	L4201	B C	4C	
C1602	B C	3C	C3023	B C	3A	C3919	A C	4B	C4815	A C	3B	C6225	A C	3B	D6206	A C	2B	L4301	B C	4C	
C1603	B C	3C	C3024	B C	3A	C3920	A C	4B	C4819	A C	3B	C6226	A C	2B	D6207	A C	2B	L4302	B C	4C	
C1605	B C	3C	C3025	B C	1A	C3923	A C	3A	C4820	A C	4C	C6227	A C	2B	D6701	A C	2C	L4303	B C	5B	
C1606	B C	3C	C3026	B C	1A	C3924	A C	4A	C4822	A C	3C	C6228	A C	3B	D6702	A C	2C	L4304	B C	4B	
C1607	A C	3A	C3027	B C	2A	C3925	A C	4B	C4823	A C	4B	C6229	A C	1B	D8051	B C	2C	L4305	B C	4C	
C1610	B C	3D	C3028	B C	1A	C3951	A C	3B	C4851	A C	4B	C6230	A C	3B	D8401	A C	5B	L4306	B C	4B	
C1611	B C	3D	C3029	B C	1A	C3954	A C	3B	C4852	A C	4B	C6231	A C	5B	IC				L4307	B C	3B
C1612	B C	3D	C3030	B C	3B	C3955	A C	3A	C4853	A C	4B	C6701	A C	2D	IC1001	B C	4A	L4802	A C	4C	
C1613	B C	3C	C3031	B C	3A	C3956	A C	3A	C4854	A C	4B	C6702	A C	2C	IC1002	B C	5A	L4851	A C	4B	
C1614	B C	3D	C3032	B C	3B	C3957	A C	3A	C4855	A C	4B	C6703	A C	2C	IC1003	B C	4A	L4852	A C	4B	
C1615	B C	3D	C3033	B C	3A	C3958	A C	3A	C4858	A C	4B	C6704	A C	2C	IC1004	B C	4B	L4853	A C	4B	
C1616	B C	3D	C3034	B C	3A	C3959	A C	3A	C4859	A C	4B	C6705	A C	3B	IC1005	B C	4B	L5501	A C	3C	
C1617	B C	3D	C3035	B C	3A	C3961	A C	3B	C4860	A C	4B	C8001	B C	2C	IC1006	B C	4B	L5502	A C	3C	
C1618	B C	3C	C3038	B C	2B	C3962	A C	3B	C4861	A C	4B	C8002	B C	2C	IC1007	B C	4A	L5503	A C	3D	
C1619	B C	3C																			

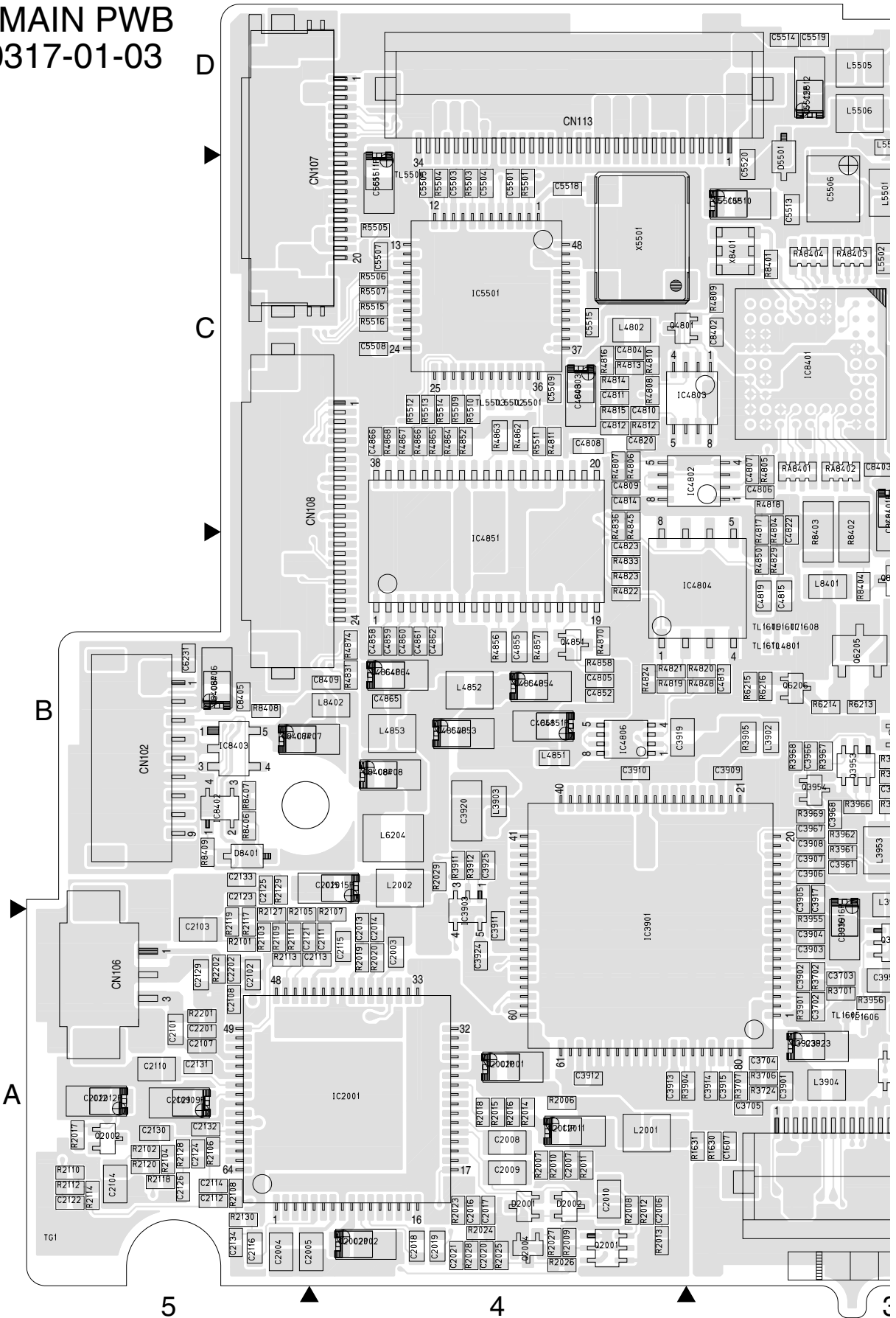
COMPONENT PARTS LOCATION GUIDE <MAIN/YB10317-01-03>

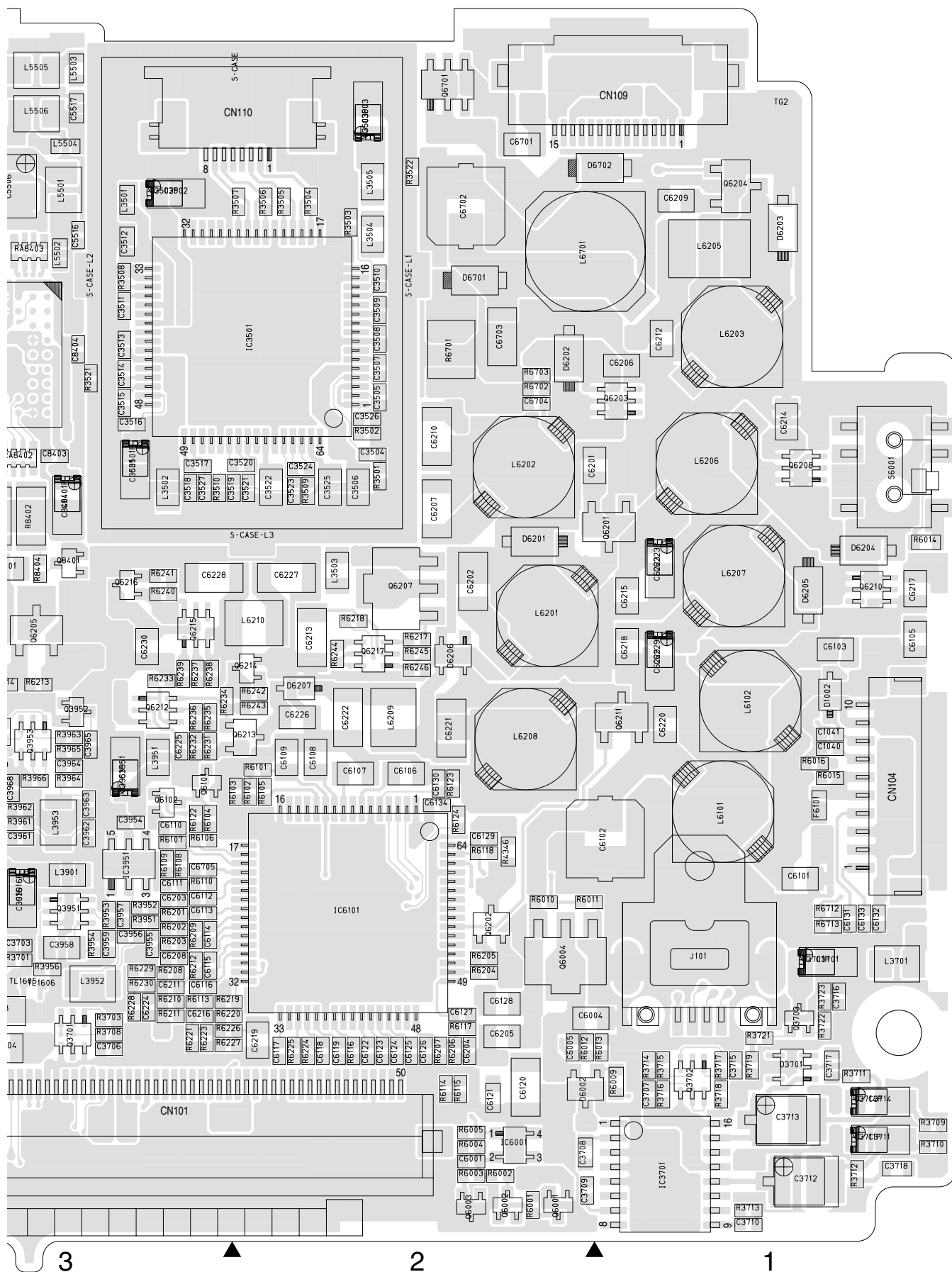
(2/2)

REF.NO.	LOCATION	REF.NO.	LOCATION	REF.NO.	LOCATION	REF.NO.	LOCATION	REF.NO.	LOCATION	REF.NO.	LOCATION	REF.NO.	LOCATION
TRANSISTOR		R1042	B C 4A	R1640	B C 3C	R3506	A C 2C	R4349	B C 5B	R6208	A C 3A	RA3001	B C 3A
Q1001	B C 4A	R1043	B C 4A	R1641	B C 3C	R3507	A C 2C	R4350	B C 4B	R6209	A C 3A	RA4301	B C 4D
Q1002	B C 4A	R1044	B C 5A	R1643	B C 3C	R3508	A C 3C	R4351	B C 5B	R6210	A C 3A	RA4302	B C 4D
Q1003	B C 4A	R1045	B C 5A	R1646	B C 3C	R3509	A C 2C	R4804	A C 3C	R6211	A C 3A	RA4303	B C 4C
Q1004	B C 4A	R1046	B C 5A	R2006	A C 4A	R3510	A C 3C	R4805	A C 3C	R6212	A C 3A	RA4304	B C 3D
Q1005	B C 4A	R1047	B C 5A	R2007	A C 4A	R3521	A C 3C	R4806	A C 4C	R6213	A C 3B	RA4305	B C 3C
Q1006	B C 5A	R1048	B C 5A	R2008	A C 4A	R3522	A C 2C	R4807	A C 4C	R6214	A C 3B	RA4306	B C 3B
Q1007	B C 5A	R1049	B C 5A	R2009	A C 4A	R3701	A C 3A	R4808	A C 4C	R6215	A C 3B	RA8401	A C 3C
Q1301	B C 3A	R1050	B C 5A	R2010	A C 4A	R3702	A C 3A	R4809	A C 3C	R6216	A C 3B	RA8402	A C 3C
Q1401	B C 3B	R1051	B C 4A	R2011	A C 4A	R3703	A C 3A	R4810	A C 4C	R6217	A C 2B	RA8403	A C 3C
Q1402	B C 3B	R1052	B C 4A	R2012	A C 4A	R3704	B C 5B	R4811	A C 4C	R6218	A C 3A	RA8404	A C 3C
Q1403	B C 3A	R1053	B C 4A	R2013	A C 4A	R3705	B C 5B	R4812	A C 4C	R6219	A C 3A	OTHER	
Q1404	B C 3A	R1054	B C 4A	R2014	A C 4A	R3706	A C 3A	R4813	A C 4C	R6220	A C 3A	F6101	A C 1B
Q1601	B C 3D	R1055	B C 4A	R2015	A C 4A	R3707	A C 3A	R4814	A C 4C	R6221	A C 3A	J101	A C 1C
Q2001	A C 4A	R1056	B C 4A	R2016	A C 4A	R3708	A C 3A	R4815	A C 4C	R6222	A C 3A	S6001	A C 1C
Q2002	A C 5A	R1057	B C 4A	R2017	A C 5A	R3709	A C 1A	R4816	A C 4C	R6223	A C 3A	TL1001	B C 4A
Q2004	A C 4A	R1058	B C 4A	R2018	A C 4A	R3710	A C 1A	R4817	A C 3C	R6224	A C 2A	TL1002	B C 4A
Q3701	A C 3A	R1060	B C 4A	R2019	A C 4A	R3711	A C 1A	R4818	A C 3C	R6225	A C 2A	TL1003	B C 4A
Q3702	A C 1A	R1061	B C 3A	R2020	A C 4A	R3712	A C 1A	R4819	A C 4B	R6226	A C 3A	TL1301	B C 4B
Q3703	A C 1A	R1062	B C 3A	R2023	A C 4A	R3713	A C 1A	R4820	A C 3B	R6227	A C 3A	TL1401	B C 3B
Q3951	A C 3A	R1080	B C 3A	R2024	A C 4A	R3714	A C 1A	R4821	A C 4B	R6228	A C 3A	TL1402	B C 3B
Q3952	A C 3B	R1302	B C 3A	R2025	A C 4A	R3715	A C 1A	R4822	A C 4B	R6229	A C 3A	TL1403	B C 3B
Q3953	A C 3B	R1305	B C 3A	R2026	A C 4A	R3716	A C 1A	R4823	A C 4B	R6230	A C 3A	TL1404	B C 3B
Q3954	A C 3B	R1306	B C 3A	R2027	A C 4A	R3717	A C 1A	R4824	A C 4B	R6231	A C 3B	TL1406	B C 3A
Q4301	B C 4B	R1401	B C 3B	R2028	A C 4A	R3718	A C 1A	R4825	A C 4B	R6232	A C 3B	TL1407	B C 3A
Q4302	B C 4B	R1402	B C 3B	R2029	A C 4B	R3719	A C 1A	R4826	A C 4B	R6233	A C 3B	TL1408	B C 3A
Q4303	B C 4B	R1403	B C 3B	R2101	A C 5A	R3721	A C 1A	R4827	A C 4B	R6234	A C 3B	TL1409	B C 3A
Q4801	A C 4C	R1407	B C 3B	R2102	A C 5A	R3722	A C 1A	R4828	A C 4B	R6235	A C 3B	TL1410	B C 3A
Q4851	A C 4C	R1408	B C 3B	R2103	A C 5A	R3723	A C 1A	R4829	A C 4B	R6236	A C 3B	TL1411	B C 3A
Q6001	A C 2A	R1409	B C 3B	R2104	A C 5A	R3724	A C 3A	R4830	A C 4B	R6237	A C 3B	TL1412	B C 3B
Q6002	A C 2A	R1410	B C 3B	R2105	A C 5A	R3901	A C 3A	R4831	A C 4B	R6238	A C 3B	TL1413	B C 3B
Q6003	A C 2A	R1411	B C 3B	R2106	A C 5A	R3904	A C 4A	R4832	A C 4B	R6239	A C 3B	TL1414	B C 3A
Q6004	A C 2A	R1412	B C 3B	R2107	A C 4A	R3905	A C 3B	R4833	A C 4B	R6240	A C 3B	TL1415	B C 3A
Q6101	A C 3B	R1413	B C 3B	R2108	A C 5A	R3911	A C 4B	R4834	A C 4B	R6241	A C 3B	TL1416	B C 3A
Q6102	A C 3B	R1414	B C 3A	R2109	A C 5A	R3912	A C 4B	R4835	A C 4B	R6242	A C 2B	TL1601	B C 3C
Q6201	A C 1B	R1415	B C 3A	R2110	A C 5A	R3951	A C 3A	R4836	A C 4B	R6243	A C 2B	TL1602	B C 3C
Q6202	A C 2A	R1416	B C 3A	R2111	A C 5A	R3952	A C 3A	R4837	A C 4B	R6244	A C 2B	TL1603	B C 3C
Q6203	A C 1C	R1417	B C 3B	R2112	A C 5A	R3953	A C 3A	R4838	A C 4B	R6245	A C 2B	TL1604	B C 3D
Q6204	A C 1C	R1418	B C 3A	R2113	A C 5A	R3954	A C 3A	R4839	A C 4B	R6246	A C 2B	TL1605	A C 3A
Q6205	A C 3B	R1419	B C 3A	R2114	A C 5A	R3955	A C 3A	R4840	A C 4B	R6701	A C 2C	TL1606	A C 3A
Q6206	A C 3B	R1420	B C 3A	R2117	A C 5A	R3956	A C 3A	R4841	A C 4B	R6702	A C 2C	TL1607	A C 3B
Q6207	A C 2B	R1422	B C 3B	R2118	A C 5A	R3961	A C 3B	R4842	A C 4B	R6703	A C 2C	TL1608	A C 3B
Q6208	A C 1C	R1423	B C 3B	R2119	A C 5A	R3962	A C 3B	R4843	A C 4B	R6712	A C 1A	TL1609	A C 3B
Q6210	A C 1B	R1424	B C 3B	R2120	A C 5A	R3963	A C 3B	R4844	A C 4B	R6713	A C 1A	TL1610	A C 3B
Q6211	A C 1B	R1425	B C 3B	R2127	A C 5A	R3964	A C 3B	R4845	A C 4B	R8001	B C 3C	TL1611	B C 2C
Q6212	A C 3B	R1426	B C 3B	R2128	A C 5A	R3965	A C 3B	R4846	A C 4B	R8002	B C 2C	TL1612	B C 3D
Q6213	A C 2B	R1427	B C 3B	R2129	A C 5B	R3966	A C 3B	R4847	A C 4B	R8003	B C 2C	TL1613	B C 3D
Q6214	A C 2B	R1428	B C 3B	R2201	A C 5A	R3967	A C 3B	R4848	A C 4B	R8004	B C 1C	TL1614	B C 3D
Q6215	A C 3B	R1429	B C 3B	R2230	A C 5A	R3968	A C 3B	R4849	A C 4B	R8005	B C 2B	TL1615	B C 3D
Q6216	A C 3B	R1430	B C 3B	R2202	A C 5A	R3969	A C 3B	R4850	A C 4B	R8006	B C 2B	TL1616	B C 3C
Q6217	A C 2B	R1432	B C 3A	R3002	B C 2A	R4201	B C 5C	R4851	A C 4B	R8007	B C 2C	TL1617	B C 3C
Q6701	A C 2D	R1433	B C 3A	R3004	B C 2A	R4202	B C 5C	R4852	A C 4B	R8008	B C 2C	TL1618	B C 3C
Q8001	B C 3C	R1434	B C 3A	R3007	B C 2A	R4203	B C 5C	R4853	A C 4B	R8009	B C 2C	TL1619	B C 3C
Q8401	A C 3B	R1435	B C 3A	R3008	B C 2A	R4204	B C 5C	R4854	A C 4B	R8010	B C 2C	TL3001	B C 1C
		R1436	B C 3A	R3009	B C 3A	R4205	B C 4C	R4855	A C 4B	R8011	B C 2C	TL3002	B C 2A
		R1437	B C 3A	R3010	B C 3A	R4206	B C 4C	R4856	A C 4B	R8012	B C 2C	TL3003	B C 1C
		R1438	B C 3A	R3011	B C 3A	R4207	B C 4C	R4857	A C 4B	R8013	B C 2C	TL3501	B C 1C
R1001	B C 4A	R1440	B C 3A	R3013	B C 2A	R4208	B C 4C	R4858	A C 4B	R8014	B C 2C	TL4201	B C 4C
R1002	B C 5B	R1441	B C 3A	R3014	B C 2A	R4301	B C 4B	R4859	A C 4B	R8015	B C 2C	TL4202	B C 5C
R1003	B C 5B	R1442	B C 3A	R3015	B C 2A	R4302	B C 3C	R4860	A C 4B	R8016	B C 2C	TL4203	B C 5D
R1004	B C 5B	R1443	B C 3A	R3016	B C 1A	R4303	B C 5C	R4861	A C 4B	R8017	B C 2C	TL4301	B C 3C
R1005	B C 5B	R1444	B C 3A	R3017	B C 1A	R4304	B C 5C	R4862	A C 4B	R8018	B C 2C	TL4302	B C 4B
R1006	B C 5B	R1445	B C 3A	R3018	B C 1A	R4307	B C 5C	R4863	A C 4B	R8019	B C 2C	TL4303	B C 4B
R1007	B C 5B	R1446	B C 3A	R3019	B C 1A	R4308	B C 5C	R4864	A C 4B	R8020	B C 2C	TL4304	B C 4C
R1008	B C 3A	R1601	B C 3C	R3020	B C 1A	R4311	B C 5B	R4865	A C 4B	R8021	B C 2C	TL4305	B C 4B
R1009	B C 4A	R1602	B C 3C	R3021	B C 1A	R4312	B C 5B	R4866	A C 4B	R8022	B C 2C	TL4306	B C 4B
R1010	B C 5A	R1603	B C 3C	R3022	B C 1A	R4313	B C 5B	R4867	A C 4B	R8023	B C 2C	TL4307	B C 4B
R1011	B C 4A	R1604	B C 3C	R3023	B C 1A	R4314	B C 5B	R4868	A C 4B	R8024	B C 2C	TL4308	B C 4B
R1012	B C 4A	R1605	B C 3D	R3024	B C 1A	R4315	B C 5B	R4869	A C 4B	R8025	B C 2C	TL4309	B C 4B
R1013	B C 4A	R1606	B C 2C	R3025	B C 2B	R4316	B C 4B	R4870	A C 4B	R8026	B C 2C	TL4310	B C 4B
R1014	B C 4A	R1607	B C 3C	R3026	B C 2B	R4317	B C 4B	R4871	A C 4B	R8027	B C 2C	TL4311	B C 4B
R1015	B C 4A	R1608	B C 3C	R3027	B C 3A	R4318	B C 4B	R4872	A C 4B	R8028	B C 2C	TL4312	B C 4B
R1016	B C 4A	R1609	B C 3D	R3028	B C 2B	R4319	B C 4B	R4873	A C 4B	R8029	B C 2C	TL4313	B C 4B
R1017	B C 3A	R1610	B C 3C	R3029	B C 2B	R4320	B C 4B	R4874	A C 4B	R8030	B C 2C	TL4314	B C 4B
R1018	B C 3A	R1611	B C 4D	R3030	B C 3B	R4321	B C 4B	R4875	A C 4B	R8031	B C 2C	TL4405	B C 4B
R1019	B C 3A	R1612	B C 3C	R3031	B C 3A	R4322	B C 4B	R4876	A C 4B	R8032	B C 2C	TL4801	A C 3B
R1020	B C 3A	R1613	B C 3C	R3032	B C 3A	R4323	B C 4B	R4877	A C 4B	R8033	B C 2C	TL5501	A C 4C
R1021	B C 3A	R1614	B C 3C	R3033	B C 3A	R4324	B C 4B	R4878	A C 4B	R8034	B C 2C	TL5502	A C 4C
R1022	B C 3A	R1615	B C 3C	R3034	B C 3A	R4325	B C 4B	R4879	A C 4B	R8035	B C 2C	TL5503	A C 4C
R1023	B C 4B	R1616	B C 3C	R3035	B C 2B	R4326	B C 4B	R4880	A C 4B	R8036	B C 2C	TL5504	A C 4C
R1024	B C 4B	R1617	B C 3C	R3036	B C 2A	R4327	B C 4B	R4881	A C 4B	R8037	B C 2C	TL8001	B C 1C
R1025	B C 4B	R1618	B C 3C	R3037	B C 1A	R4328	B C 4B	R4882	A C 4B	R8038	B C 2C	X1001	B C 4A
R1026	B C 4B	R1619	B C 3C	R3038	B C 1A	R4329	B C 4B	R4883	A C 4B	R8039	B C 2C	X1002	B C 5A
R1027	B C 4B	R1620	B C 3C	R3039	B C 1A	R4330	B C 4B	R4884	A C 4B	R8040	B C 2C	X5501	A C 4C
R1028	B C 4B	R1621	B C 3C	R3040	B C 1A	R4331	B C 4B	R4885	A C 4B	R8041	B C 2C	X8001	B C 2D
R1029	B C 5A	R1622	B C 2C	R3041	B C 1A	R4332	B C 4B	R4886	A C 4B	R8042	B C 2C	X8401	A C 3C
R1030	B C 5A	R1623	B C 3D	R3042	B C 1A	R4333	B C 4B	R4887	A C 4B	R8043	B C 2C		
R1031	B C 4B	R1624	B C 3B	R3043	B C 1A	R4334	B C 4B	R4888	A C 4B	R8044	B C 2C		
R1032	B C 4B	R1625	B C 3B	R3044	B C 1A	R4335	B C 4B	R4889	A C 4B	R8045	B C 2C		
R1033	B C 5A	R1626	B C 3C	R3045	B C 2A	R4336	B C 4B	R4890	A C 4B	R8046	B C 2C		
R1034	B C 5A	R1627	B C 3C	R3046	B C 2A	R4337	B C 4B	R4891	A C 4B	R8047	B C 2C		
R1035	B C 5A	R1628	B C 3C	R3047	B C 2A	R4338	B C 4B	R4892	A C 4B				

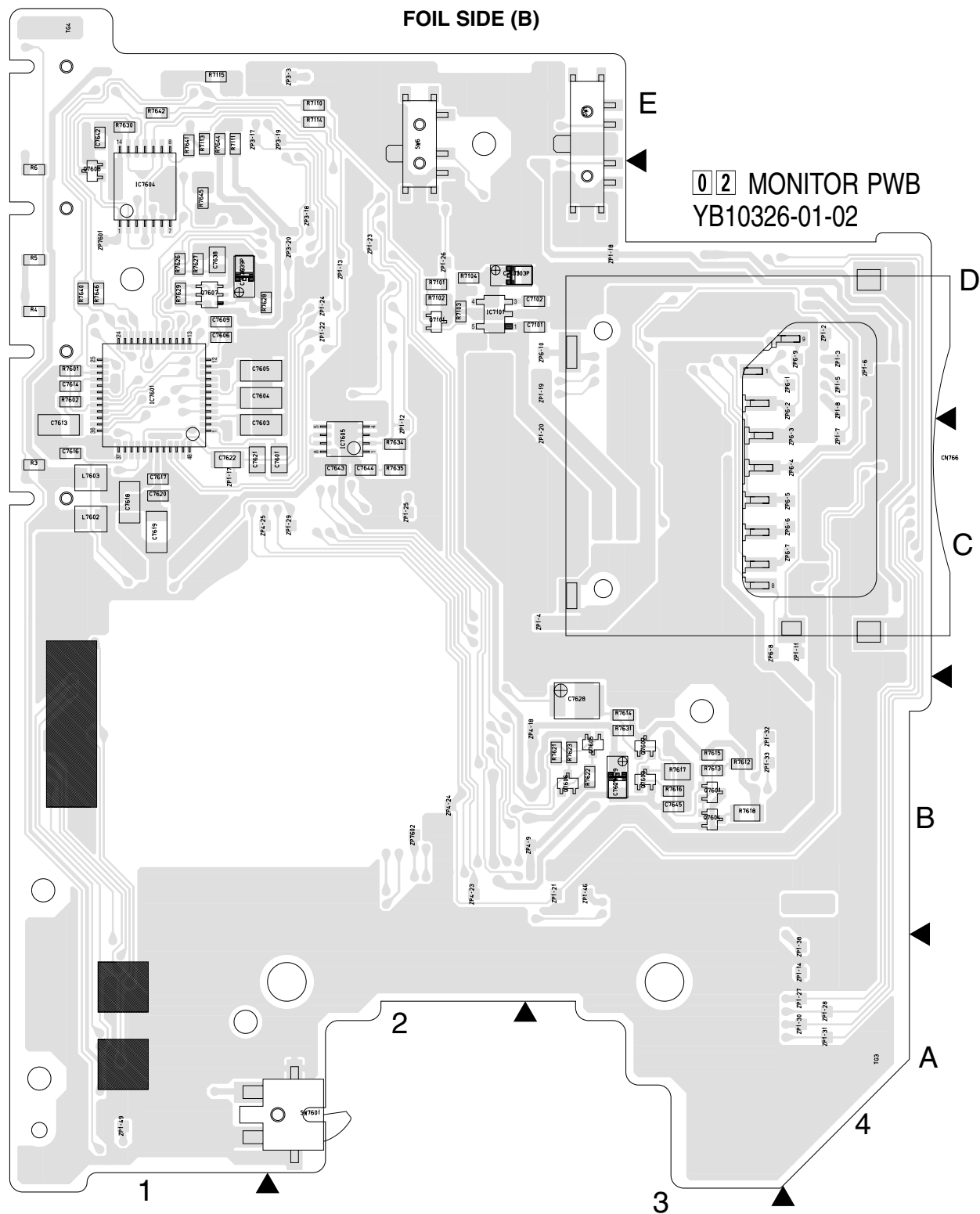
COMPONENT SIDE(A)

0 1 MAIN PWB
YB10317-01-03





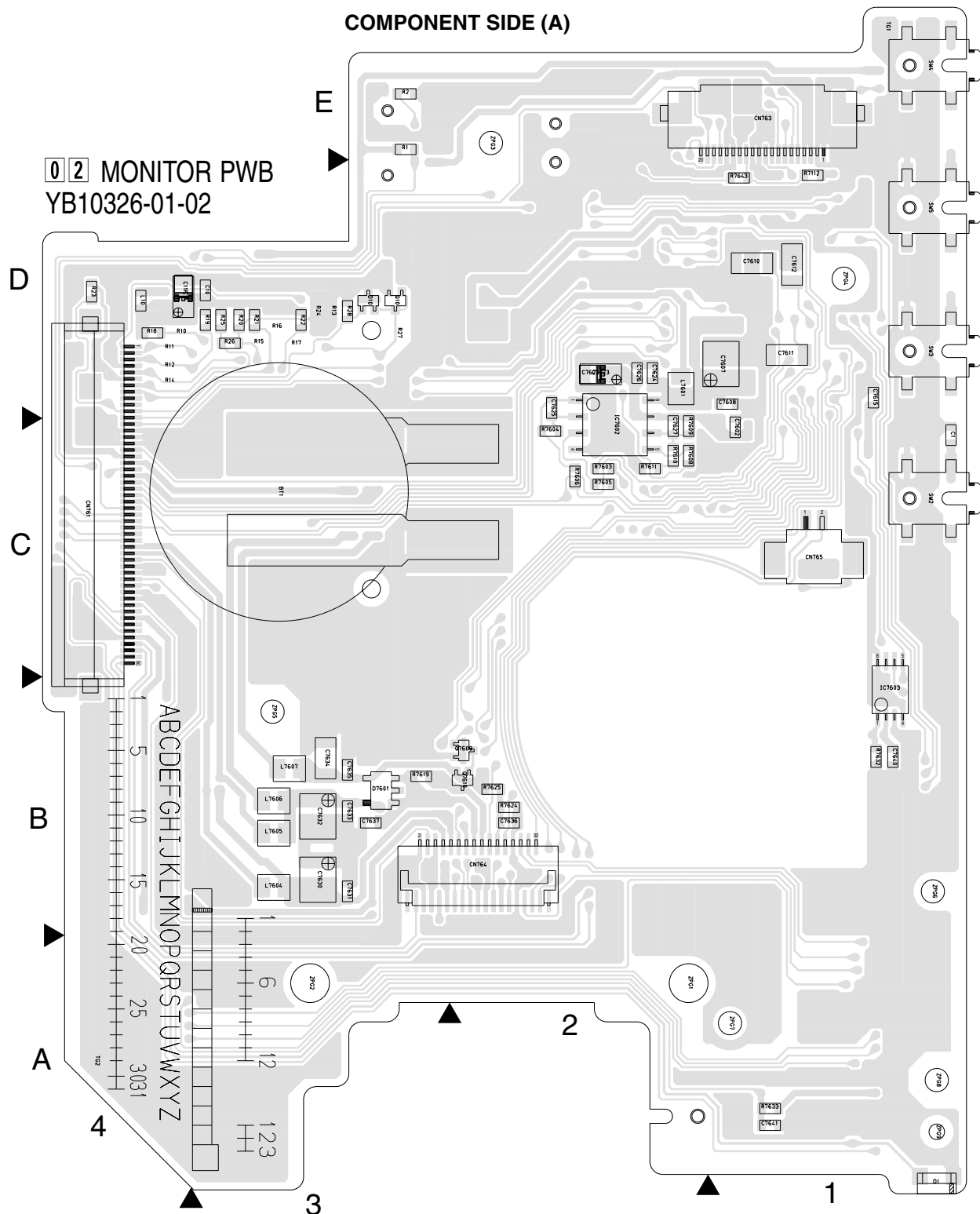
4.2 MONITOR CIRCUIT BOARD



COMPONENT PARTS LOCATION GUIDE <MONITOR/YB10326-01-02>

(1/2)

REF.NO.	LOCATION	REF.NO.	LOCATION	REF.NO.	LOCATION	REF.NO.	LOCATION	REF.NO.	LOCATION	REF.NO.	LOCATION	REF.NO.	LOCATION	REF.NO.	LOCATION
CAPACITOR		C7608	A C 1D	C7622	B C 1C	C7636	A C 2B	CN764	A C 3B	IC7605		Q7601	B C 3B	R3	B C 1C
C1	A C 1C	C7609	B C 3B	C7623	A C 2D	C7637	A C 3B	CN765	A C 1C	COIL		Q7602	B C 3B	R4	B C 1D
C10	A C 3D	C7610	A C 1D	C7624	A C 2D	C7638	B C 1D	CN766	B C 4C	L10	A C 4D	Q7603	B C 3B	R5	B C 1D
C11	A C 4D	C7611	A C 1D	C7625	A C 2D	C7639	B C 1D	DIODE		L7601	A C 2D	Q7604	B C 3B	R6	B C 1D
C7101	B C 3D	C7612	A C 1D	C7626	A C 2D	C7640	A C 1B	D1	A C 1A	L7602	A C 1C	Q7605	B C 3B	R18	A C 4D
C7102	B C 3D	C7613	B C 1C	C7627	A C 2C	C7641	A C 1A	D10	A C 3D	L7603	B C 1C	Q7606	B C 3B	R19	A C 3D
C7103	B C 2D	C7614	B C 1D	C7628	B C 3B	C7642	B C 1E	D7601	A C 3B	L7604	A C 3B	Q7607	B C 1D	R20	A C 3D
C7601	A C 2C	C7615	A C 1D	C7629	B C 3B	C7643	B C 2C	IC		L7605	A C 3B	Q7608	B C 1D	R21	A C 3D
C7602	A C 1C	C7616	B C 1C	C7630	A C 3B	C7644	B C 2C	IC7101	B C 2D	L7606	A C 3B	Q7609	A C 2B	R22	A C 3D
C7603	B C 1C	C7617	B C 1C	C7631	A C 3B	C7645	B C 3B	IC7601	B C 1D	L7607	A C 3B	Q7610	A C 2B	R23	A C 4D
C7604	B C 1D	C7618	B C 1C	C7632	A C 3B	CONNECTOR		IC7602	A C 2C	TRANSISTOR		RESISTOR		R25	A C 3D
C7605	B C 1D	C7619	B C 1C	C7633	A C 3B	CN761	A C 4D	IC7603	A C 1B	Q10	A C 3D	R1	A C 3E	R26	A C 3D
C7606	B C 1D	C7620	B C 1C	C7634	A C 3B	CN763	A C 1E	IC7604	B C 1D	Q7101	B C 2D	R2	A C 3E	R28	A C 3D
C7607	A C 1D	C7621	B C 1C	C7635	A C 3B							R7101		B	B C 2D



COMPONENT PARTS LOCATION GUIDE <MONITOR/YB10326-01-02>

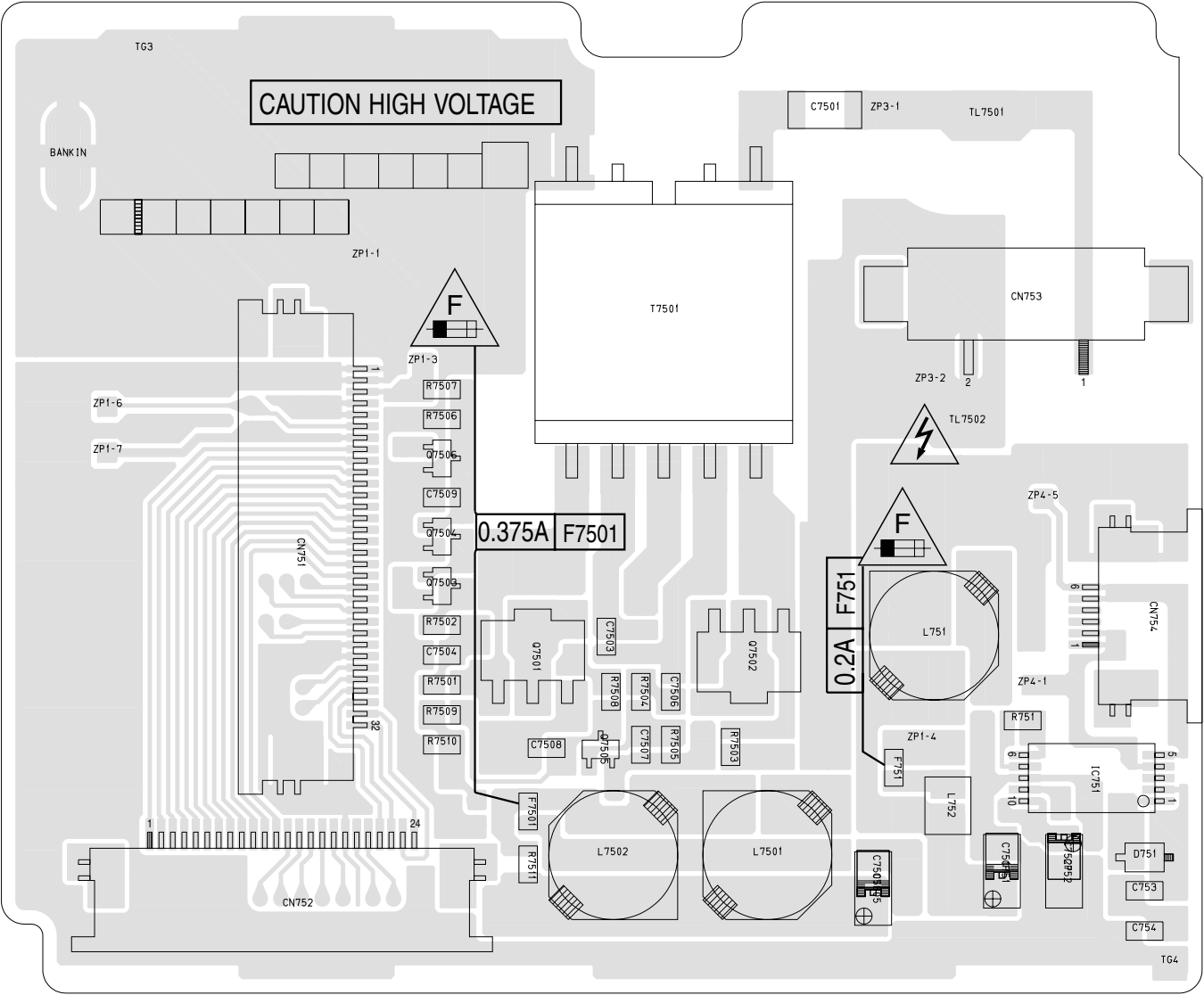
(2/2)

REF.NO.	LOCATION	REF.NO.	LOCATION	REF.NO.	LOCATION	REF.NO.	LOCATION	REF.NO.	LOCATION	REF.NO.	LOCATION	REF.NO.	LOCATION	REF.NO.	LOCATION	REF.NO.	LOCATION
R7606	A C 2C	R7622	B C 3B	R7640	B C 1D	C7639P	B C 1D	ZP1-5	B C 4D	ZP6-9	B C 4D	ZP1-26	B C 2D	ZP3-20	B C 3B	ZPG7	A D 1A
R7608	A C 2C	R7623	B C 3B	R7641	B C 1E	SW1	B C 3E	ZP1-6	B C 4C	ZP1-11	B C 4C	ZP1-27	B C 4C	ZP4-18	B C 3B	ZPG8	A D 1A
R7609	A C 2C	R7624	A C 2B	R7642	B C 1E	SW2	A C 1C	ZP1-7	B C 4C	ZP1-12	B C 2C	ZP1-28	B C 2C	ZP4-23	B C 2B	ZPG9	A D 1A
R7610	A C 2C	R7625	A C 2B	R7643	A C 1D	SW3	A C 1D	ZP1-8	B C 4D	ZP1-13	B C 2D	ZP1-29	B C 2C	ZP4-24	B C 2B		
R7611	A C 2C	R7626	B C 1D	R7644	B C 1E	SW4	A C 1E	ZP3-3	B C 2E	ZP1-14	B C 4A	ZP1-30	B C 4A	ZP4-25	B C 1C		
R7612	B C 3B	R7627	B C 1D	R7645	B C 1D	SW5	A C 1D	ZP4-9	B C 3B	ZP1-17	B C 1C	ZP1-31	B C 4A	ZP6-10	B C 3D		
R7613	B C 3B	R7628	B C 1D	R7646	B C 1D	SW6	B C 2E	ZP6-1	B C 4D	ZP1-18	B C 3D	ZP1-32	B C 3B	ZP7601	B C 1D		
R7614	B C 3B	R7629	B C 1E				B C 2A	ZP6-2	B C 4D	ZP1-19	B C 3D	ZP1-33	B C 3B	ZP7602	B C 2B		
R7615	B C 3B	R7630	B C 1D	OTHER		SW7601	A C 4C	ZP1-20	B C 4C	ZP1-20	B C 3C	ZP1-38	B C 4A	ZPG1	A D 2A		
R7616	B C 3B	R7631	A C 3B			TM1	A C 4E	ZP6-4	B C 4C	ZP1-21	B C 3B	ZP1-46	B C 3B	ZPG2	A D 3A		
R7617	B C 3B	R7632	A C 1B	BT1	A C 3C	TM3	A C 4E	ZP6-5	B C 4C	ZP1-22	B C 2D	ZP1-49	B C 1A	ZPG3	A D 2E		
R7618	B C 3B	R7633	A C 1A	C11P	A C 4D	TM3	A C 4D	ZP6-6	B C 4C	ZP1-23	B C 2D	ZP3-17	B C 1E	ZPG4	A D 1D		
R7619	A C 3B	R7634	B C 2C	C7103P	B C 2D	ZP1-2	B C 4D	ZP6-7	B C 4C	ZP1-24	B C 2D	ZP3-18	B C 2D	ZPG5	A D 3B		
R7621	B C 3B	R7635	B C 2C	C7623P	A C 2D	ZP1-3	B C 4C	ZP6-8	B C 3C	ZP1-25	B C 2C	ZP3-19	B C 2E	ZPG6	A D 1B		
				C7629P	B C 3B	ZP1-4	B C 3C										

4.3 LCD BL CIRCUIT BOARD

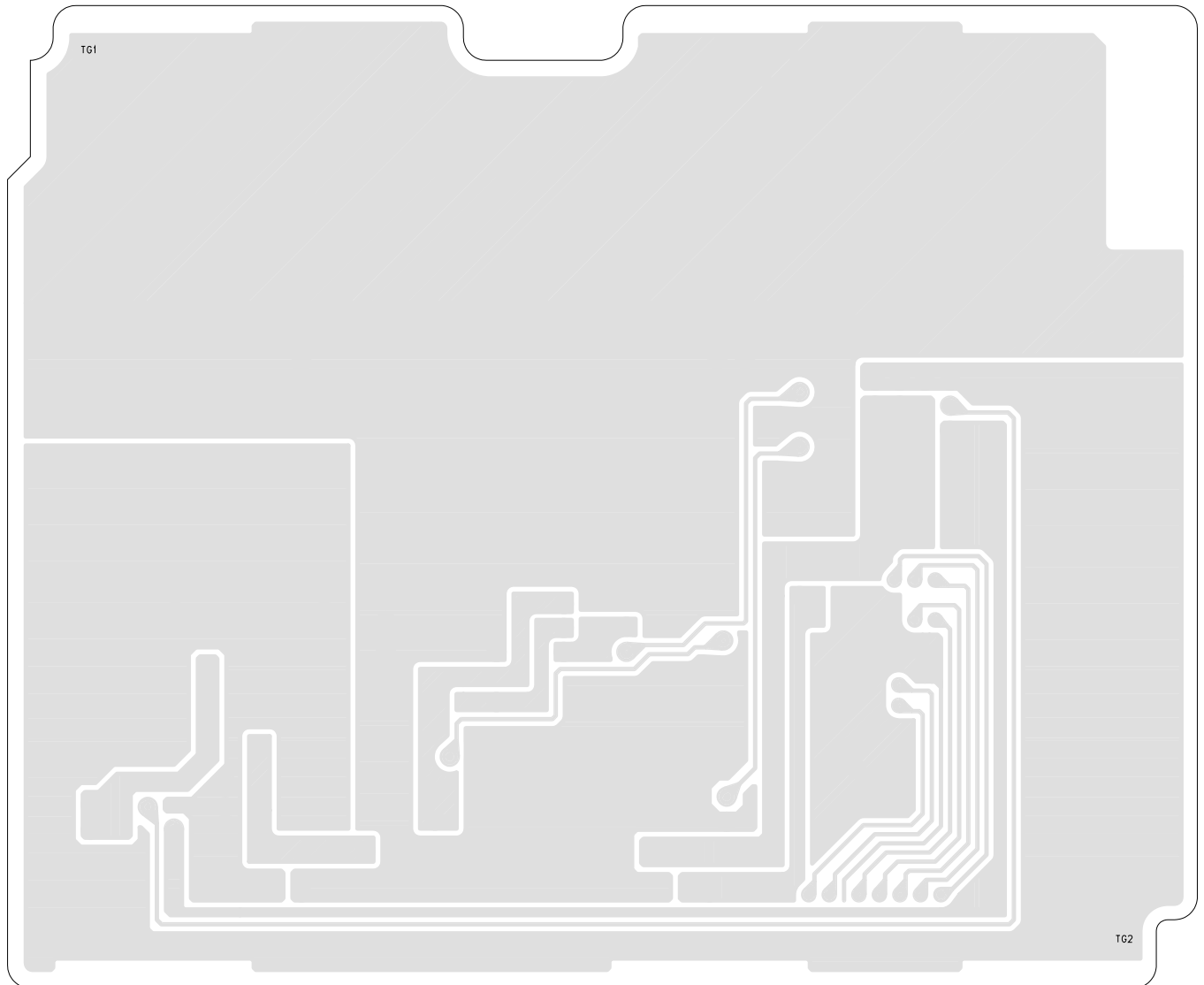
FOIL SIDE (B)

03 LCD BL PWB
YB10325-01-03



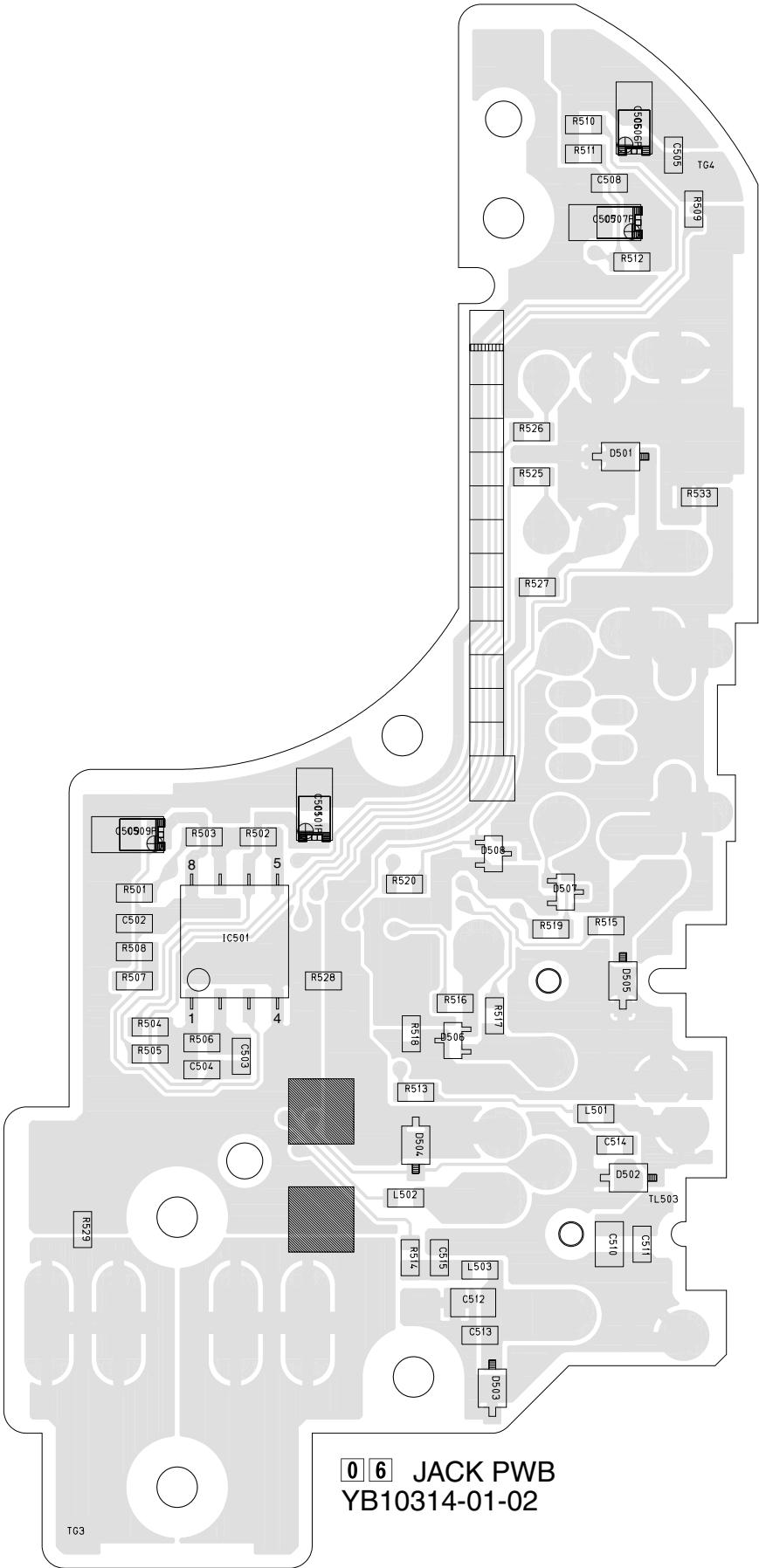
COMPONENT SIDE (A)

03 LCD BL PWB
YB10325-01-03



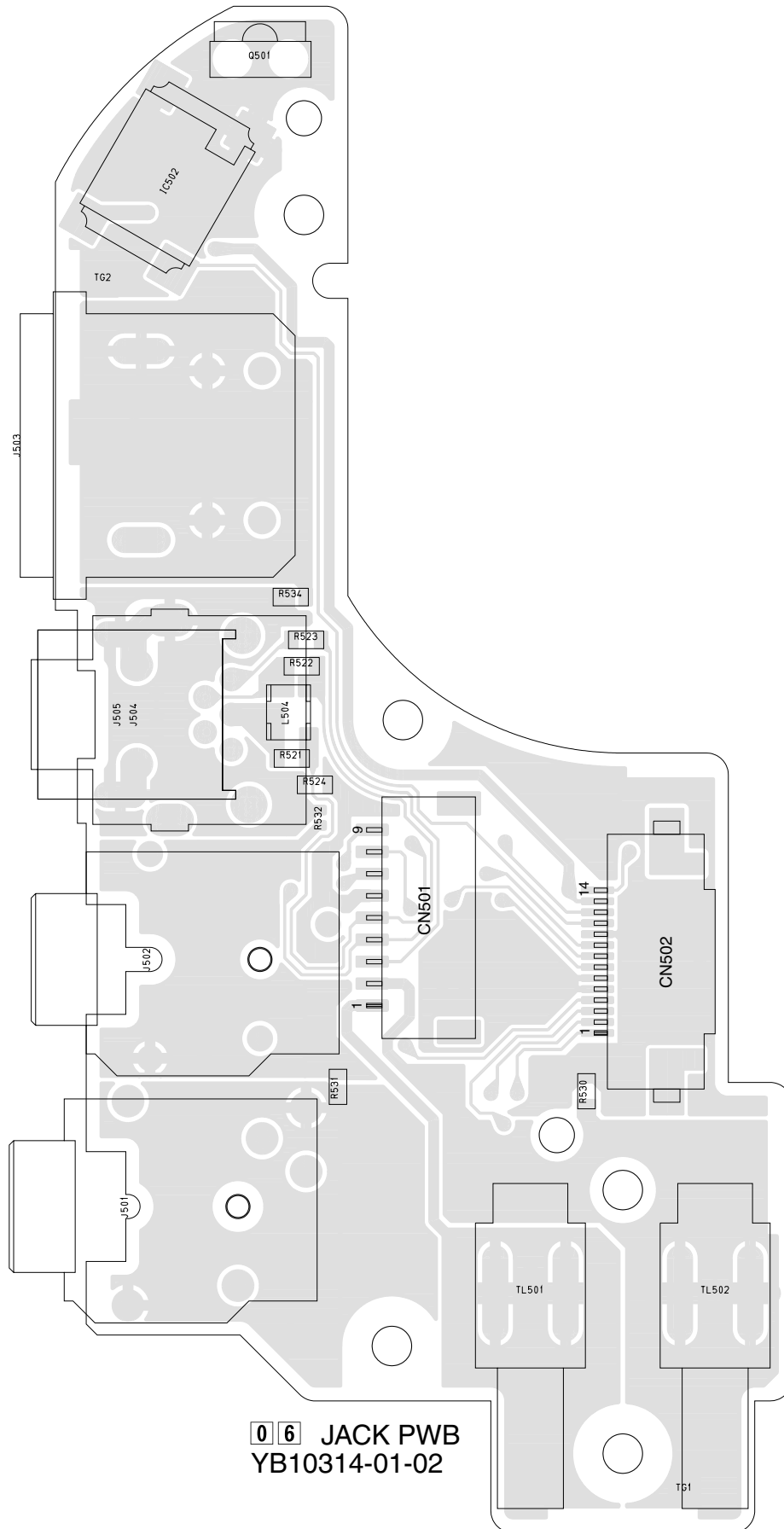
4.4 JACK CIRCUIT BOARD

FOIL SIDE(B)



0 6 JACK PWB
YB10314-01-02

COMPONENT SIDE(A)



0 6 JACK PWB
YB10314-01-02

4.5 JUNCTION CIRCUIT BOARD

